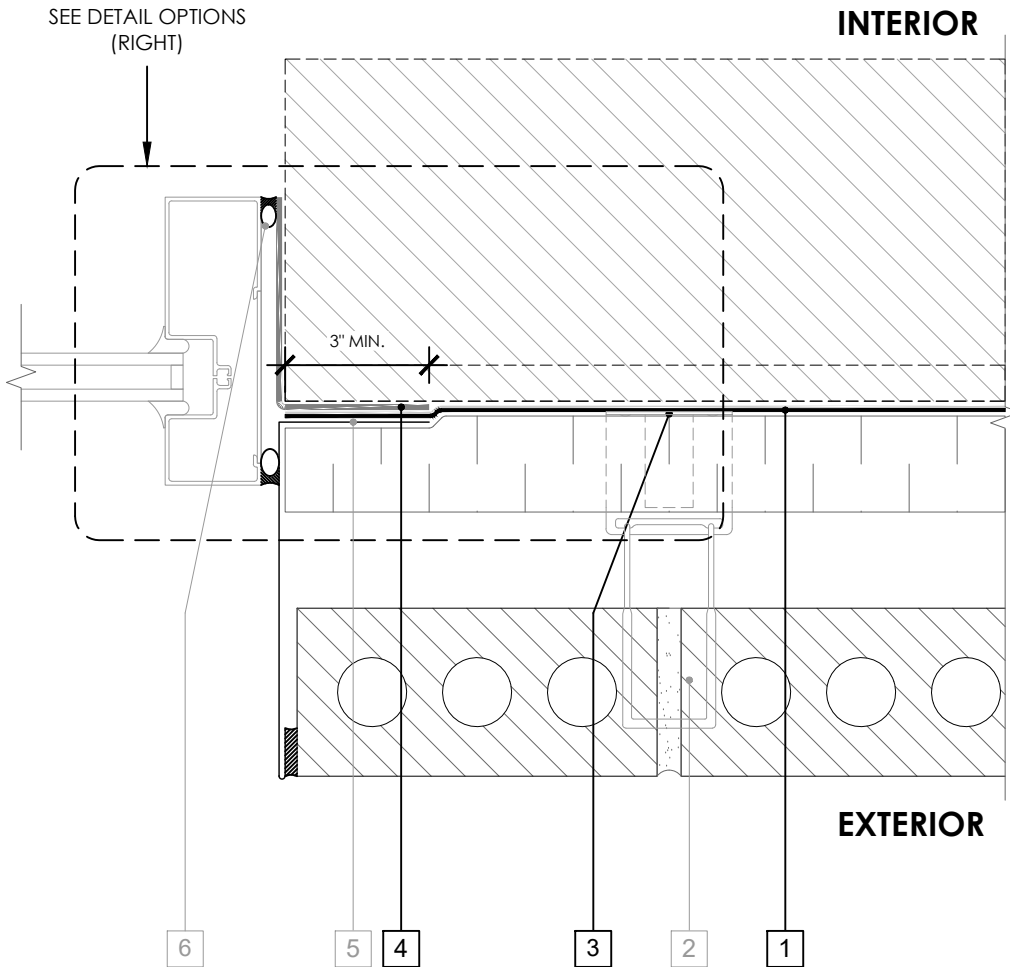


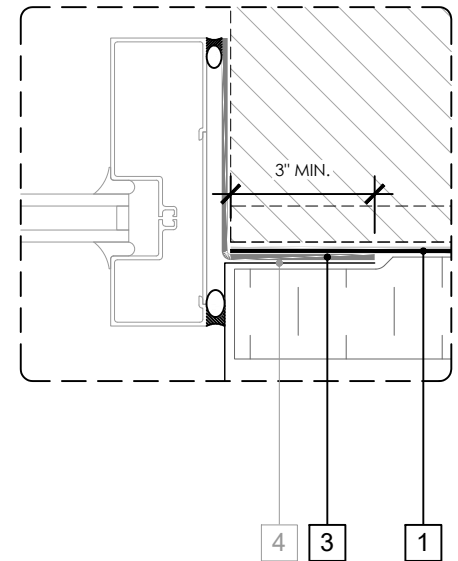
## OPTION 1



## LEGEND

1. PERM-A-BARRIER® NPS MEMBRANE
2. MASONRY ANCHOR DETAILING (SEE DRAWING NPS-006)
3. PERM-A-BARRIER® S100, PERM-A-BARRIER® LIQUID FLASHING, BITUTHENE MASTIC, OR BITUTHENE LIQUID MEMBRANE AROUND FASTENER IF REQUIRED
4. PERM-A-BARRIER® SELF-ADHERED FLASHING\*
5. SHEET METAL FLASHING PER ARCH
6. INTERIOR AIR SEALANT OVER BACKER ROD

## OPTION 2



## GENERAL NOTES

1. Detail not suitable for all climates. Avoiding excessive moisture accumulation in exterior walls is dependent on many factors including proper placement of insulation and water, air, and vapor control layers in the wall. Confirm membranes are suitable for project specific service temperatures. For assistance with exterior wall design, consult with a building science professional.
2. Install all GCP products in accordance with GCP Product Data Sheets and GCP recommendations.
3. GCP products are indicated in the detail legend in **BOLDFACE** font. Detail components by others are indicated in GRAY FONT. Install components per manufacturer and project specific requirements.

\*Refer to air barrier system product data sheet for acceptable SELF-ADHERED FLASHING\* products.



### WINDOW JAMB DETAIL - MASONRY CLADDING

PERM-A-BARRIER® NPS  
MEMBRANE

DRAWING: NPS-002

SCALE: 3" = 1'

EFFECTIVE DATE: 2020.05.21

SUPERCEDES: NEW