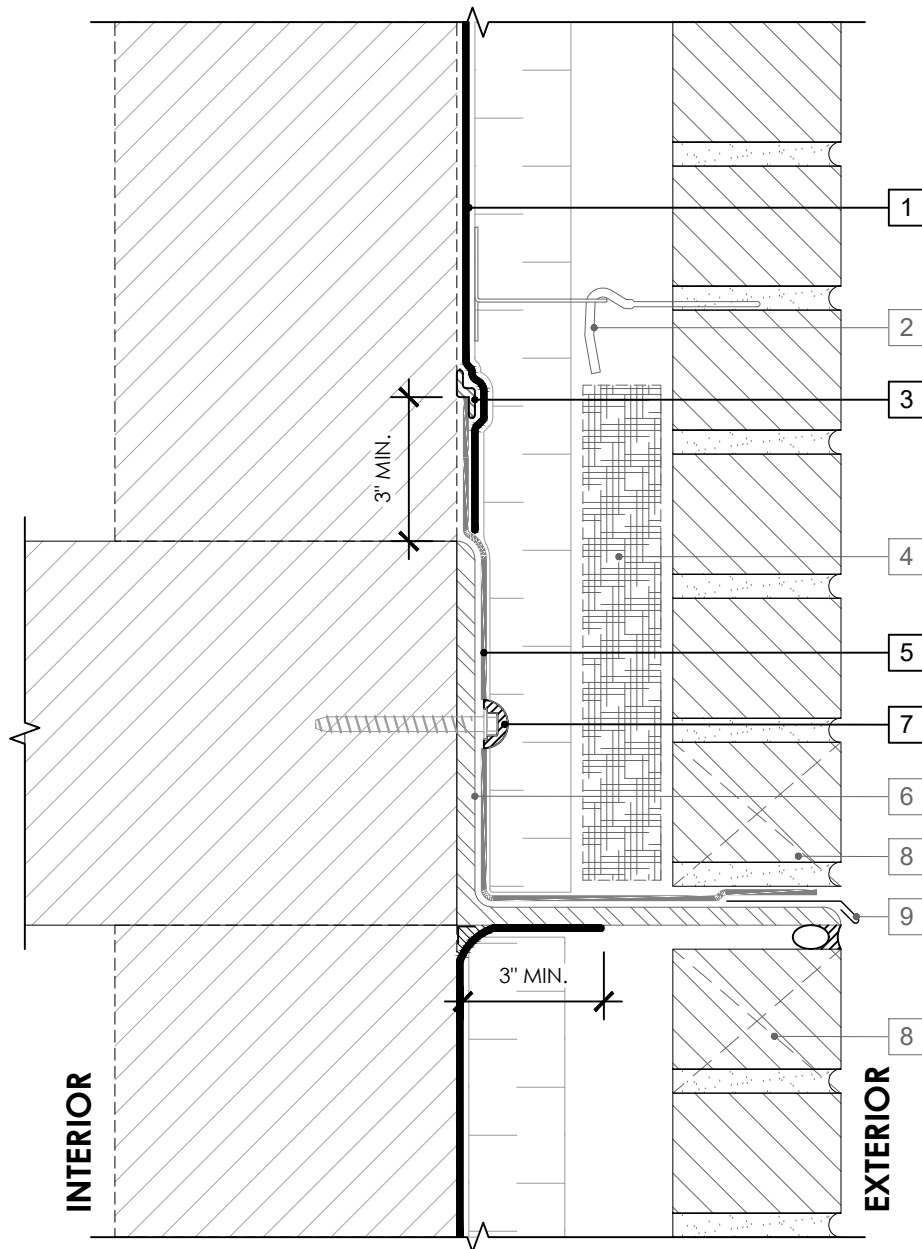


OPTION 1

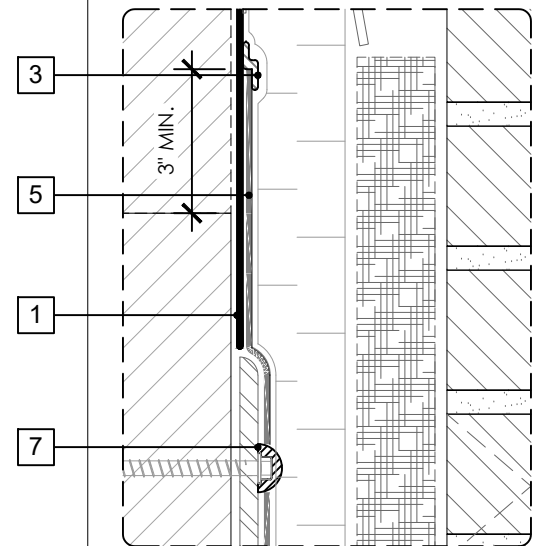


SEE VPL-005 (3D-1) FOR 3D DETAIL

LEGEND

1. PERM-A-BARRIER® VPL
2. MASONRY ANCHOR DETAILING (SEE DRAWING VPL-006)
3. PERM-A-BARRIER® S100 SEALANT - 1-INCH WIDE TROWELED BEAD
4. MORTAR COLLECTION MESH
5. PERM-A-BARRIER® WALL FLASHING (STAR CUT AT BOLT) - PRIME SUBSTRATE WHERE REQUIRED
6. CONTINUOUS SHELF ANGLE SUPPORT PER STRUCTURAL
7. PERM-A-BARRIER® S100 SEALANT AROUND FASTENER
8. MASONRY WEEP/VENT
9. SHEET METAL FLASHING PER ARCH

OPTION 2



SEE VPL-005 (3D-2) FOR 3D DETAIL

GENERAL NOTES

1. Detail not suitable for all climates. Avoiding excessive moisture accumulation in exterior walls is dependent on many factors including proper placement of insulation and water, air, and vapor control layers in the wall. Confirm membranes are suitable for project specific service temperatures. For assistance with exterior wall design, consult with a building science professional.
2. Install all GCP products in accordance with GCP Product Data Sheets and GCP recommendations.
3. GCP products are indicated in the detail legend in **BOLDFACE** font. Detail components by others are indicated in GRAY FONT. Install components per manufacturer and project specific requirements.

*Refer to air barrier system product data sheet for acceptable self-adhered flashing products.



FLOOR LINE DETAIL - MASONRY CLADDING

PERM-A-BARRIER® VPL

DRAWING: VPL-005

SCALE: 3" = 1'

EFFECTIVE DATE: 2020.05.21

SUPERCEDES: NEW