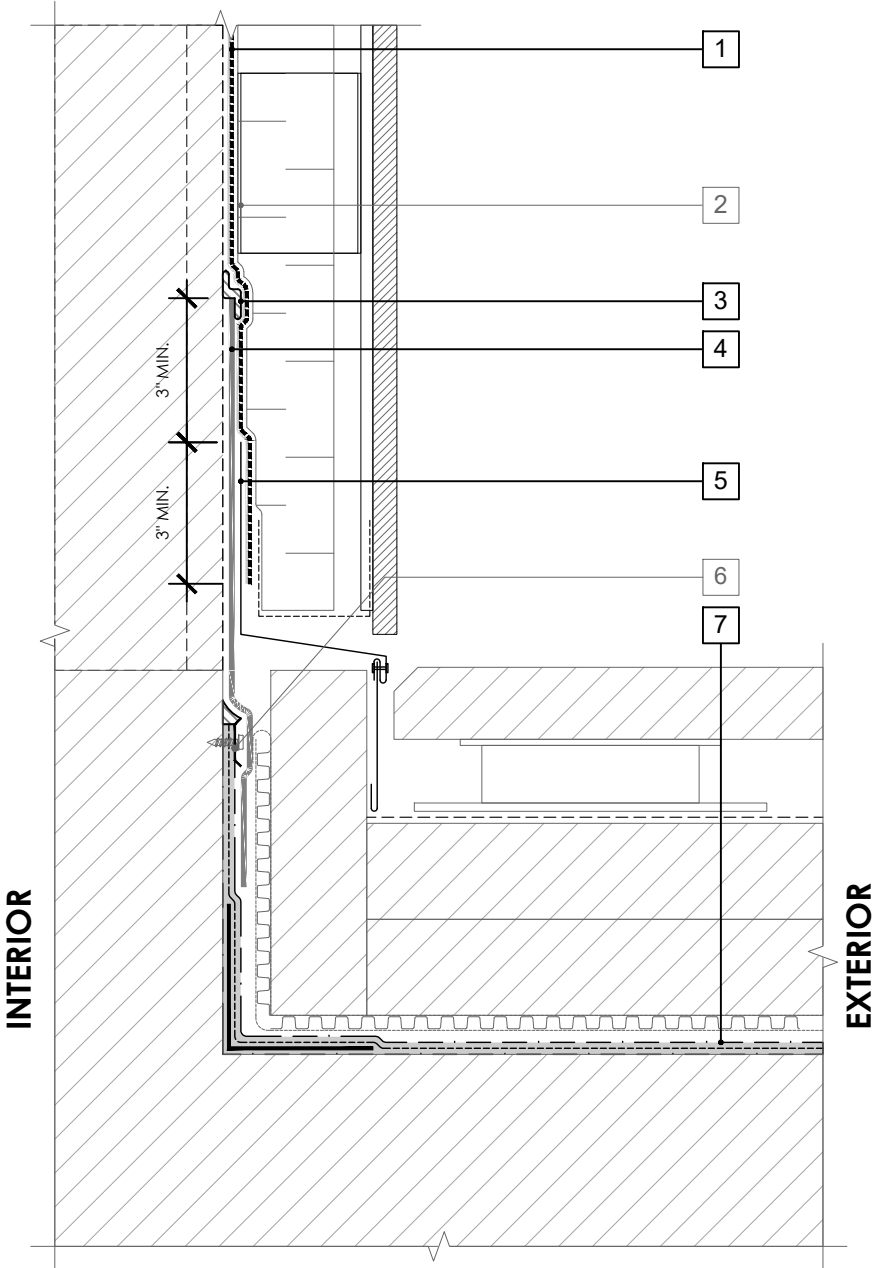


LEGEND

- 1. **PERM-A-BARRIER® VPS MEMBRANE**
- 2. CLADDING ATTACHMENT -
CONFIRM DETAILING REQUIREMENTS
WITH THE GCPAT REPRESENTATIVE
- 3. **BITUTHENE MASTIC, BITUTHENE
LIQUID MEMBRANE, OR GCP
APPROVED SEALANT - 1-INCH
TROWELED BEAD**
- 4. **PERM-A-BARRIER® SELF-ADHERED
FLASHING***
- 5. SHEET METAL FLASHING PER ARCH
- 6. TERMINATION PER HORIZONTAL
WATERPROOFING SYSTEM
MANUFACTURER
- 7. **HORIZONTAL WATERPROOFING
SYSTEM - SEE GCPAT.COM**

NOTE

- CONSULT GCP FOR HORIZONTAL
WATERPROOFING COMPATIBILITY
AND CONNECTION



GENERAL NOTES

- 1. Detail not suitable for all climates. Avoiding excessive moisture accumulation in exterior walls is dependent on many factors including proper placement of insulation and water, air, and vapor control layers in the wall. Confirm membranes are suitable for project specific service temperatures. For assistance with exterior wall design, consult with a building science professional.
- 2. Install all GCP products in accordance with GCP Product Data Sheets and GCP recommendations.
- 3. GCP products are indicated in the detail legend in **BOLDFACE** font. Detail components by others are indicated in GRAY FONT. Install components per manufacturer and project specific requirements.

Refer to air barrier system product data sheet for acceptable SELF-ADHERED FLASHING products.



**BASE-OF-WALL DETAIL -
NON-MASONRY CLADDING**

PERM-A-BARRIER® VPS

DRAWING: VPS-016

SCALE: 3" = 1'

EFFECTIVE DATE: 2020.05.21

SUPERCEDES: NEW